



What you need to know about our return to school in Term 4

We're excited about our return to face-to-face learning and welcoming students and staff back onsite where we know the best learning happens. This is a short summary of what our parents and students can expect.



Key dates for our staged return

While we know there is excitement about the return to school it's important that we stick to the staged return to give us time to be ready to welcome back students onsite. Students will return to face-to-face learning in the following order

- from 18 October – Kindergarten, Year 1
- from 25 October – all remaining year groups.

Students are expected to attend school from their designated return to school date unless they are unwell or have even the mildest of COVID-19 symptoms.

We have planned staffing based on the staggered return and the average number of students who have been attending during the remote learning phase. **It is important, that unless you are an authorised worker who cannot work from home, that those students who are not required to be at school continue to work from home.** Please speak to your child's teacher if there is a change of circumstances and your child will be returning earlier.



Our school's COVID-safe operations

Our COVID-safe return to school plan is NSW Health approved and includes numerous effective practices to support the health and wellbeing of our students and staff. These practices include vaccinations, mask wearing, reduced mingling of student groups and staff, ventilation in classrooms and continued good hygiene and cleaning.



Keeping student groups together

As we return to school students will be kept in their cohorts to minimise opportunities for transmission of COVID-19 and to enable effective contact tracing and containment. This means minimising interaction between students on school grounds and keeping cohorts together where possible.

Students will remain with their class groups as much as possible and breaks will be with their stage group, e.g. all of Stage 1 together (Years 1 and 2).

Students should arrive at school after 8.30am when there is adequate supervision to ensure that they are only with their cohort. When students arrive to school, they will go straight to their cohort group, spread around the school:

Kindergarten – outdoor area between KC, KW and KE

Stage 1 – K-2 quad

Stage 2 – COLA near the hall

Stage 3 – 3-6 quad

When leaving school there will be a staggered and cohort approach to dismissal. No parents will be able to come onsite. All parents waiting for students will need to wear a mask and physically distance from others.

Kindergarten will be dismissed from the **pedestrian gate** accessible on **Burrendong Road**.

Stage 1 will be dismissed from the **bus gate** accessed from **Burrendong Road**.

Stages 2 and 3 will be dismissed from the **back gate** accessed from **Parkhill Avenue**.

The **back gate**, accessed from **Parkhill Avenue** will remain **closed** until Monday 25 October (Week 4).

In family groups, older siblings will be dismissed from the area with the youngest sibling. For example, if a family group has a child in Kindergarten and Stage 2, siblings will meet at the Kindergarten area.

As we are a large school, families will be dismissed in a staggered way, in groups based on their surnames. Students will meet their parents at designated areas. Students will not leave before 2.50pm, unless there is an adult to pick them up. Students who do not have an adult to pick them up at that time, will remain with the teacher until 2.50pm. Students will be dismissed at the following times:

2.10pm: Students with surnames beginning with **A-D**

2.20pm: Students with surnames beginning with **E-K**

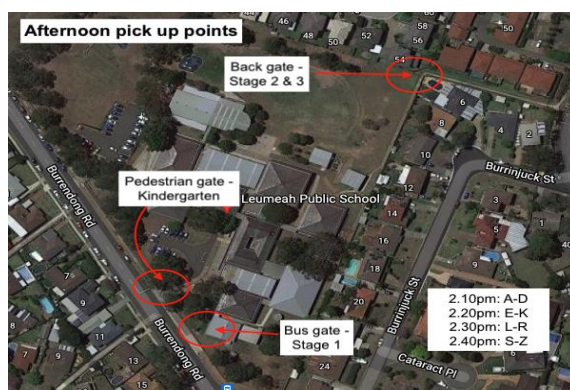
2.30pm: Students with surnames beginning with **L-R**

2.40pm: Students with surnames beginning with **S-Z**

2.50pm: Remaining students leave

Families that have children with different surnames, all children will leave at the same time as the youngest sibling.

See the map below to see where you child will need to be picked up from.



Mask wearing for students and staff

Masks are required to be worn on school site by staff indoors and outdoors and strongly recommended for students indoors and outdoors unless exercising or eating.

All students are able to wear a mask and they will be offered one every morning when they begin their lesson. The school will offer masks to all students every day. Students are welcome to wear their own masks or bring one to school.

Masks should also be worn by students who are travelling on public transport.

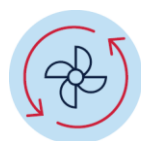


Vaccinations

All staff required on site supporting the return to school will need to be fully vaccinated from 18 October. Then from 8 November all staff, contractors, volunteers and students on student placement on a school site will need to be fully vaccinated, including Outside of School Hours Care staff.

All our canteen operators and uniform shop staff will be vaccinated by 8 November.

We encourage our school community to take up the option of receiving a vaccine. Vaccines are now available for students 12 years and older.



Ventilation

Having open or well-ventilated spaces reduces the risk of transmission of COVID-19 because infectious particles are more quickly diffused in the open air. The department will continue to work with NSW Health to provide us with advice and guidance on maintaining good ventilation in our school and we will make use of our outdoor spaces wherever practical.

LPS will be ensuring that outside learning areas are accessed regularly. All classrooms will be well ventilated with doors open and when required, fans operating. Every classroom has a full set of operational fans.



School activities

During Term 4 many school-based activities will remain on hold until NSW Health advise otherwise. This includes large celebrations like assemblies, presentation days and graduations, arts and sports events.

We are currently planning for our end of year events to happen virtually. We look forward to sharing this with you, in line with current health advice of the day. You will receive more information about this.



Covid Communication

Parents and students will be notified if a decision is made to close the school due to a confirmed case of COVID-19. During this time we will continue to provide learning from home activities and we will let you know when we can return to face-to-face learning.

We will communicate all relevant information via Seesaw, Sentral, Facebook and the website. Make sure you download the NSW Schools Update App and follow us on Facebook to keep up to date with relevant communication.



Preschool and out of school hours care

Out of school hours care, vacation care settings and preschools operating on school sites will follow the same COVID-safe guidelines as public schools including the requirement to be fully vaccinated from 8 November.



Orientation and transition to school

Onsite orientations and transition programs are not currently allowed in person on school sites until we are advised differently by NSW Health. We'll share more information in the coming weeks about our school's virtual orientation and transition program.

Our school has planned an online transition and orientation program for our 2022 Kindergarten students. Families who have completed the enrolment process will receive information about this virtual information.

Where possible, students are encouraged to travel in a private car or walk to school. If students are travelling on public transport, they must physically distance and wear a mask.

If you have any questions about our COVID safe return, please contact the school.

Yours sincerely,

Kristy Hill
(rel) Principal